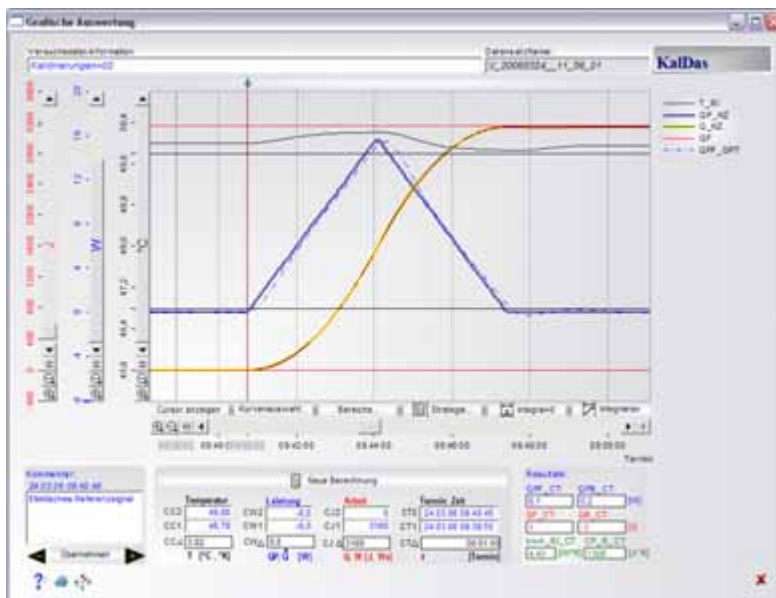


Reactions Calorimetry highly flexible

KalDas the universal calorimetric evaluation Software for all operation modes.



KalDas is a new development in the field of reactions calorimetry. This program provides you with data that you need for model evaluations (e.g. scale up) and considerations of energy and safety.

KalDas is based on the flexible control and data analysis software platform HiText and may therefore be easily customised to your special requirements.

The acquired data can be evaluated at the push of a button and the results are displayed in a free configurable and a clearly arranged protocol.

KalDas was primarily developed for the HiTec reaction calorimeter. However, there is no restriction to any specific calorimeter, i.e. the program may be adapted to every other device.

KalDas is suitable for on-line and off-line evaluation.

Heat flow over the reactor wall is calculated according to the equation:

$$\dot{Q}_{Chem} = C_p \cdot \dot{T}_R + (kW \cdot A) \cdot (T_R - \bar{T}_M) - \dot{Q}_{Stirr} + \dot{Q}_{Loss} - \dot{Q}_{Heat}$$

Heat inflow and dissipation of the stirrer, condenser, and dosage flow as well as accumulated heat is regarded in the calculation. If needed, the calculations may be expanded to heat balance calorimetry or other methods.

The Options dialogue offers options for basis line correction an evaluation strategies. That enables the user to adapt the evaluation to his special needs.

Your advantages

- a modern, comfortable, graphic user interface
- freely selectable evaluation strategies
- freely definable baselines, CP and Kwa interpolation
- powerful correction and filter functions
- freely configurable report (graphics, tables and numeric and text fields)
- adjustments and extensions adapted to your needs are possible

Simple handling

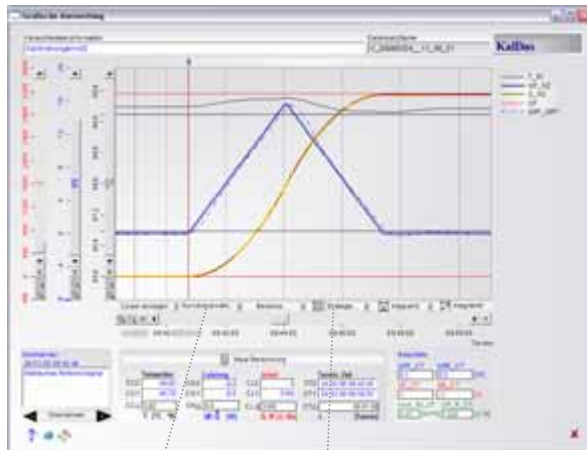
All dialogues and windows can be called directly via the main menu of the navigation window. With a click on the button [load data] (Daten laden) you load your experimental data and start the evaluation.

KalDas is fully integrated in the HiBatch recipe control software. One or more calibration steps can be inserted in the recipe flow chart.

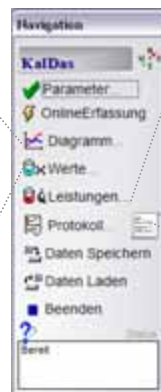
The diagrams allow to fade in or out any curve during runtime.

Reactions Calorimetry highly flexible

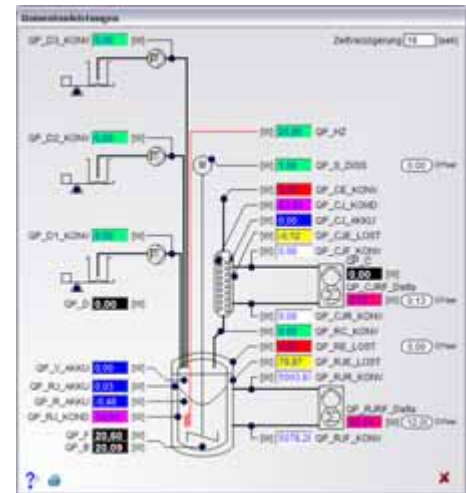
KalDas comfortable user interface (rem.: alternatively available in English)



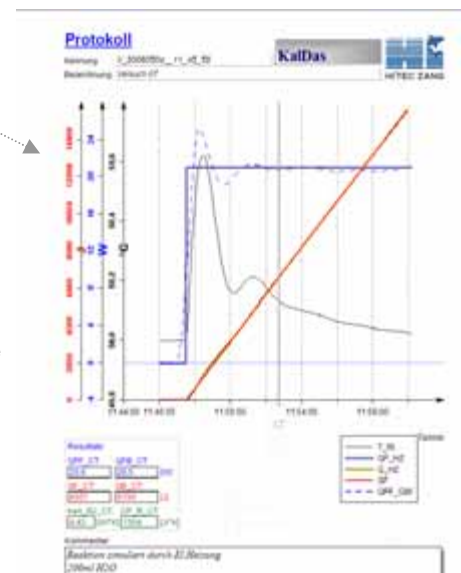
Options for many evaluation options and strategies are available



All dialogues can be reached directly via the main menu of the navigation window.



Visualisation of amount and place of each individual power.



Freely convertible report (graphics, tables and numeric and text fields)

Do you have any questions ?

Feel free to contact us:
We will be happy to provide advice.

The data window shows all currently measured values